

# STAR-D1816

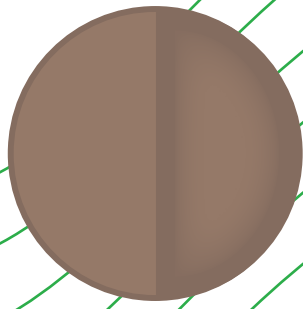
Decorative PVD Coating System

D-Series  
*Customizable Chamber*  
*10+ Colors*

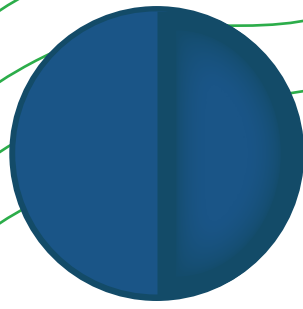


The STAR-D1816 is your gateway to a world of vibrant possibilities in surface enhancement

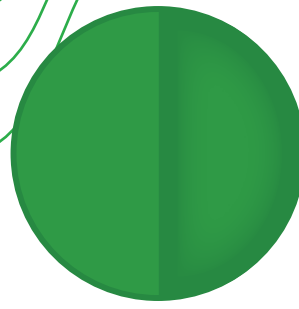




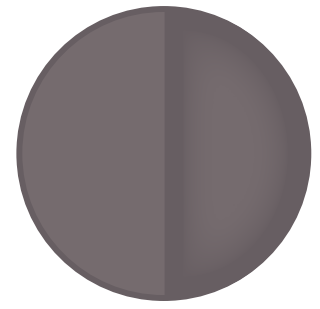
Copper Gold



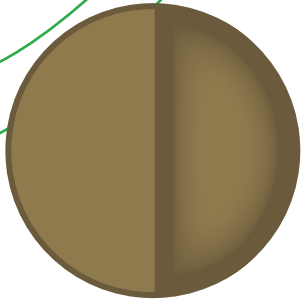
Cobalt Blue



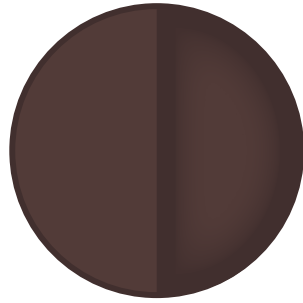
Pear Green



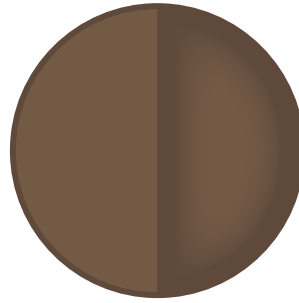
Black Gold



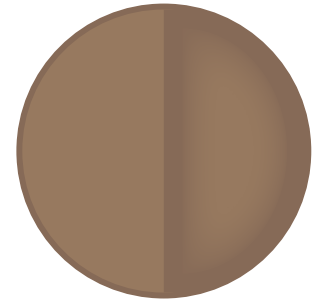
Gold



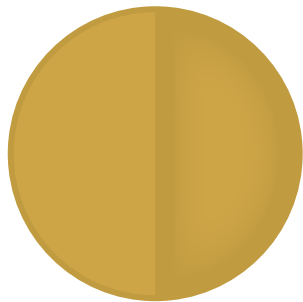
Bronze Gold



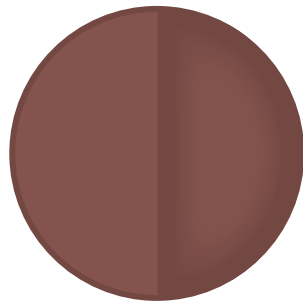
Rose Gold



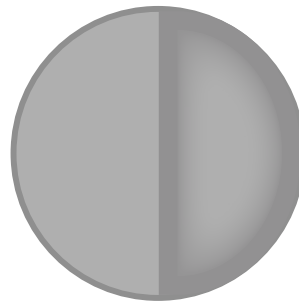
Antique Gold



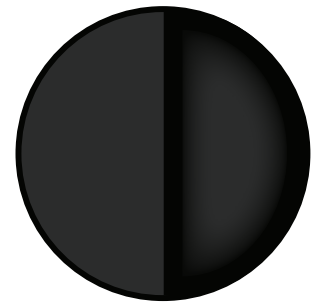
Champagne Gold



Burgundy



Silver



Black

## SYSTEM SPECIFICATIONS

<b>Chamber Size</b>	Φ1800 x 1600 mm Φ70.9" x 63.0"	<b>Technology</b>	Vacuum Arc + Sputtering
<b>Effective Plasma Zone</b>	Φ1400 x 1200mm Φ55.1" x 47.2"	<b>Vacuum Arc Source</b>	20 sets (Round) Φ100 mm
<b>Footprint</b>	L 5,018 x W 4,560 x H 2,675 mm 197.6" x 179.5" x 105.3"	<b>Sputtering Source</b>	4 sets (Cylindrical) Φ70 x 1400 mm
<b>Carousel</b>	Planetary 16-Axis	<b>Cycle Time</b>	15-40 minutes