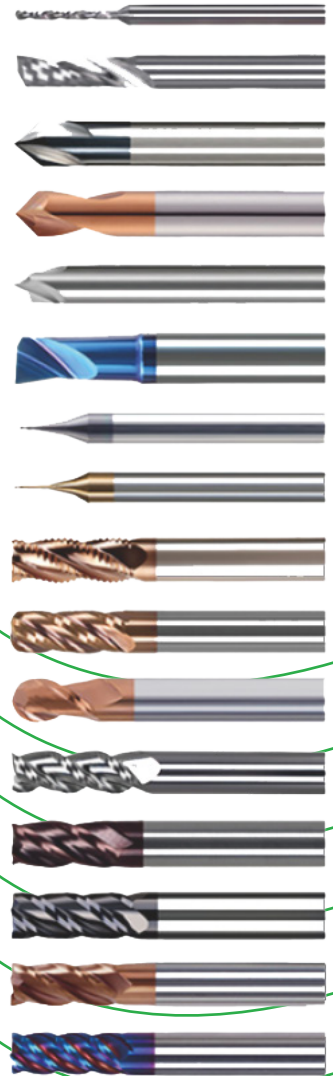


JMAP-920BM

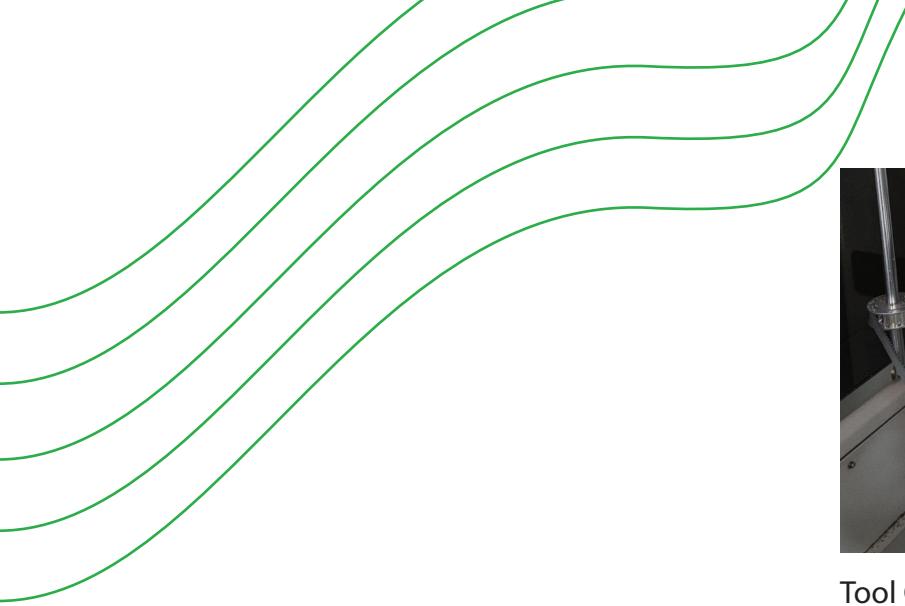
Automatic Air Lapping System

*All-in-One Edge-Prep, Polishing
and Deburring System*



Elevate Your Cutting Tools with the JMAP-920BM Automatic Air Lapping System

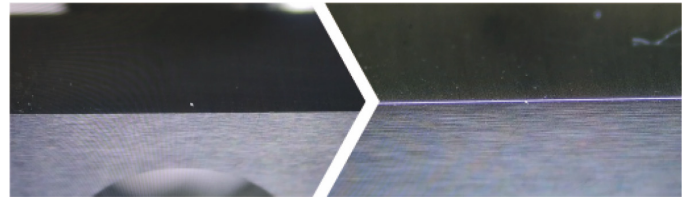
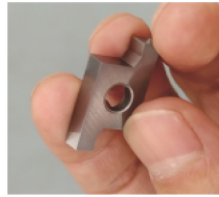




Tool Carousel

Edge Prepping

Improves edge strength, enhances chip removal, prevents material from sticking to the surface



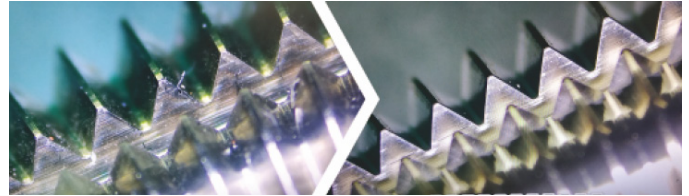
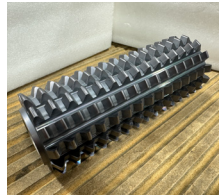
Polishing

Achieve smooth and mirror finish through air lapping polishing



Deburring

Removes micro burrs from edges, improves finish, enhances durability and wear resistance, strengthens the edge



SYSTEM SPECIFICATIONS

Footprint L 1,160 x W 1,163 x H 2,437 mm
45.7" x 45.8" x 95.9"

Tool Dimensions Ø2 – Ø 25 mm
(Ø 1/8" – Ø 1")

Weight 1,100 KG
2,425 LB

Production Rate 1 piece / min
400 pieces / day

Power Requirement 220V or 380V
(3 phase) / 1.64 kW

Loading Capacity 20 pieces / batch