

JMAP-500BM

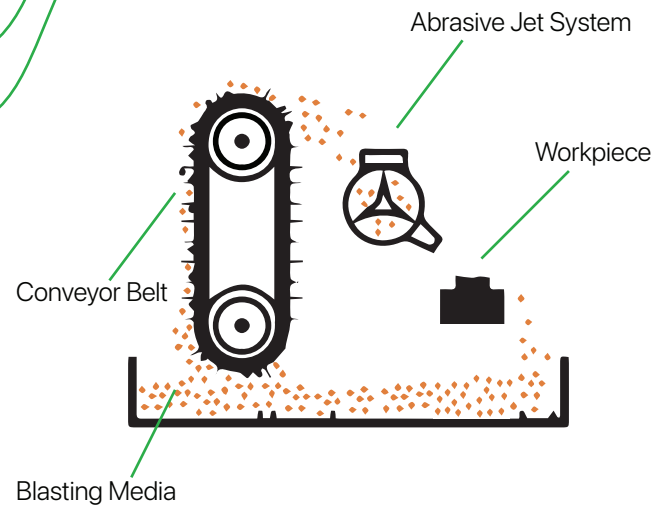
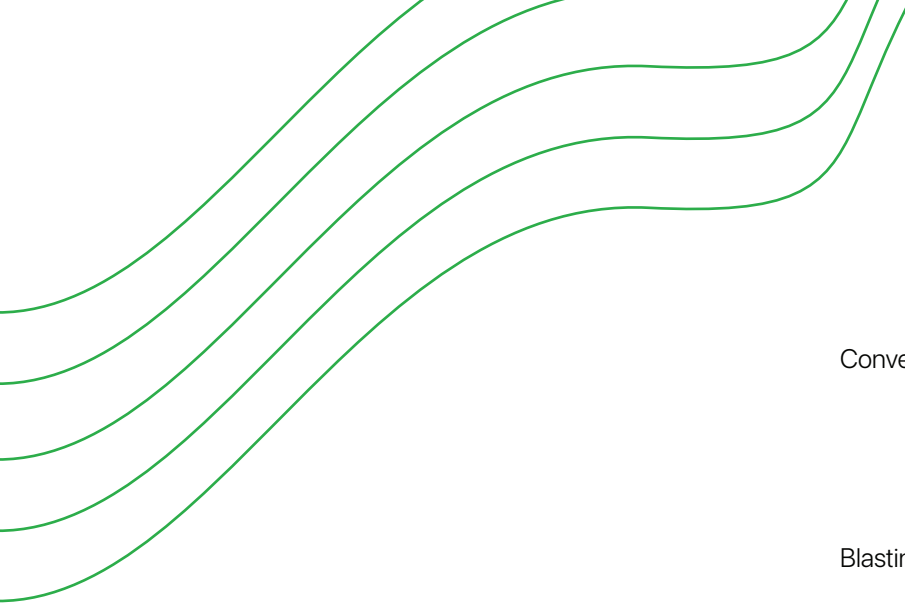
Manual Air Lapping System

*All-in-One Edge-Prep, Polishing
and Deburring System*



Enhance the Surface Quality of Your Parts and Tools with the
JMAP-500BM Manual Air Lapping System

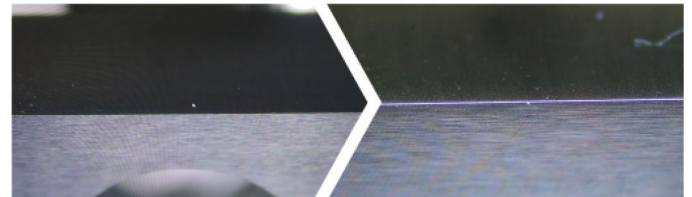
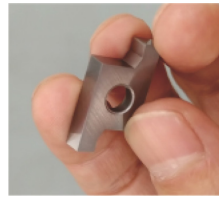




AIR LAPPING PROCESS

Edge Prepping

Improves edge strength, enhances chip removal, prevents material from sticking to the surface



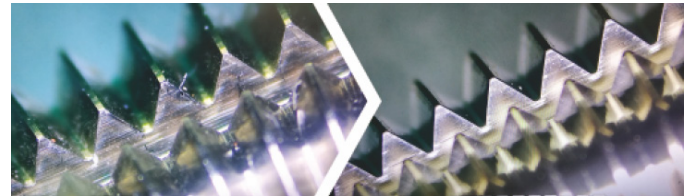
Polishing

Achieve smooth and mirror finish through air lapping polishing



Deburring

Removes micro burrs from edges, improves finish, enhances durability and wear resistance, strengthens the edge



SYSTEM SPECIFICATIONS

Footprint	L 530 x W 800 x H 1,700 mm 20.87" x 31.5" x 66.9"	Maximum Workpiece Size	200 x 200 x 50mm 7.87" x 7.87" x 1.97"
Weight	175 KG 386 LB	Production Rate	50 pieces / hr
Power Requirement	220V or 380V (3 phase) / 0.5 kW	Air Requirement	≥ 6 Mpa/cm ²